



## 30 Woodford Place, Wembley, Middlesex, HA9 8TE

\* A STUNNING FOUR BEDROOM, TWO BATHROOM, MODERN FAMILY HOME" We are delighted to bring to the market this exceptional four bedroom property which is being sold with no onward chain. The property has been modernised to an extremely high standard and must be viewed to truly appreciate the space and quality being offered.

Internally the property briefly comprises of a welcoming entrance hallway, a ground floor W/C, a contemporary open plan kitchen/living/dining room, three first floor bedrooms with a modern four piece family bathroom and a loft bedroom benefitting from an en-suite shower room.

Externally the property provides ample off street parking to the front and a unique wrap around garden to the side & rear.

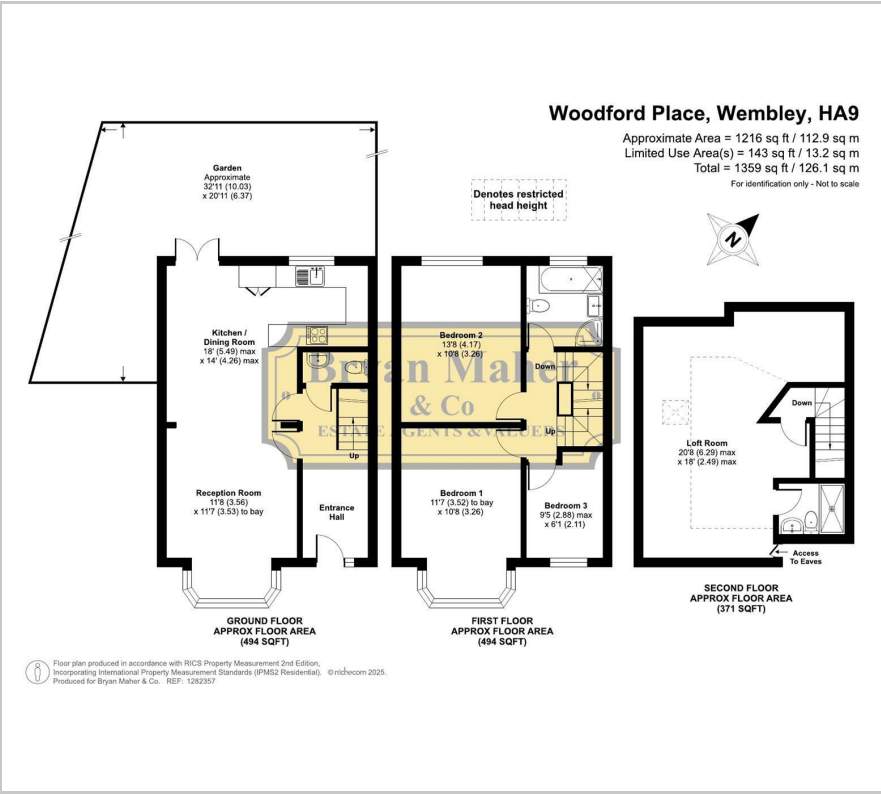
Beautiful four bedroom properties of this nature and within this location rarely come available within this price range, so an early viewing is strongly advised to avoid disappointment.

**£619,950**

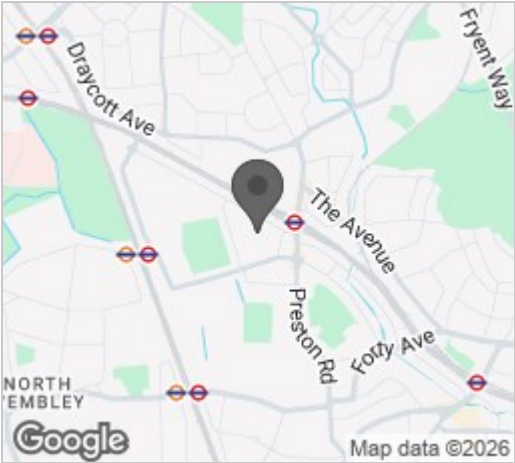
- STUNNING FAMILY HOME
- FOUR BEDROOMS
- EXCELLENT CONDITION THROUGHOUT
- GROUND FLOOR W/C & TWO MODERN BATHROOMS
- CONTEMPORARY OPEN PLAN LIVING
- BEAUTIFUL MODERN KITCHEN
- AMPLE OFF STREET PARKING
- UNIQUE WRAP AROUND GARDENS
- MINUTES WALK TO PRESTON ROAD MET' LINE TUBE
- CHAIN FREE SALE



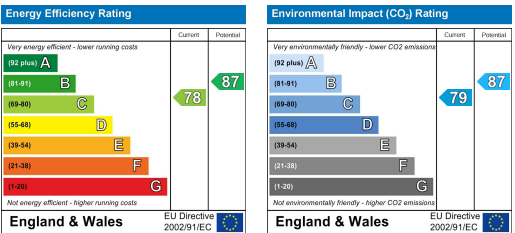
Floor Plan



Area Map



Energy Efficiency Graph



These particulars, whilst believed to be accurate are set out as a general outline only for guidance and do not constitute any part of an offer or contract. Intending purchasers should not rely on them as statements of representation of fact, but must satisfy themselves by inspection or otherwise as to their accuracy. No person in this firms employment has the authority to make or give any representation or warranty in respect of the property.